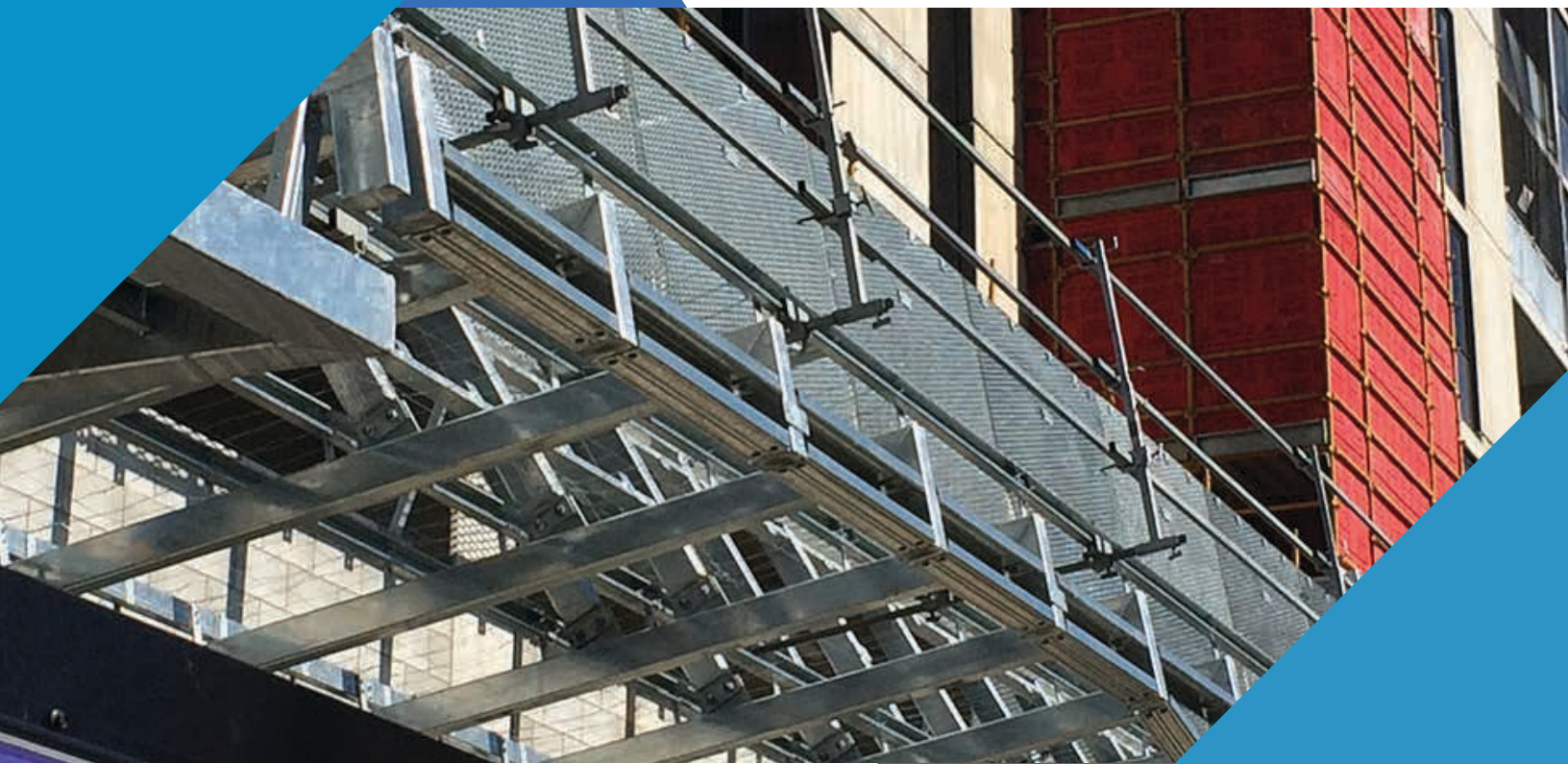


# SYSTEMS CATALOGUE

June 2018



**East-West Roof Guardrail**



*Height safety solutions to hire or buy*

# COMMERCIAL PARTS

## PURLIN

LSS-0006 Long Post  
LSS-0009 Extra Rail Clamp  
LSS-0010 Extension Post  
LSS-0010A Extension SideXSide  
LSS-0011 Multi Clamp  
LSS-0013A Purlin Needle 0.3m  
LSS-0014 Purlin Needle 1.0m  
LSS-0015 Purlin Needle 1.8m  
LSS-0016 Large G Purlin Clamp  
LSS-0018 Narrow G Purlin Clamp  
LSS-0019 Drop Purlin Clamp  
LSS-0020 Bolt-On – Structural Steel  
LSS-0021 Drop Lip Fascia Purlin Clamp (TBA)  
LSS-0029 Parallel Slider  
LSS-0030 Short Slider  
LSS-0031 Tee Bracket  
LSS-0034 Large Cross Over  
LSS-0035 Extended Cross Over  
LSS-0037 Angled Cross Over (Blue or Yellow)  
LSS-0045 Right Angled Bracket  
LSS-0091 Shade Cloth Roll

## BOND DECK, FORM WORK & STEEL BEAMS

LSS-0006 Long Post  
LSS-0011 Multi Clamp  
LSS-0020 Bolt-On – Structural Steel  
LSS-0035 Extended Cross Over  
LSS-0045 Right Angled Bracket  
LSS-0046 Extended Post Support

## ROOF BOOT

LSS-0004 Roof Boot  
LSS-0005 Short Post  
LSS-0014 Purlin Needle 1.0m  
LSS-0015 Purlin Needle 1.8m  
LSS-0034 Large Cross Over  
LSS-0037 Angled Cross Over (Blue or Yellow)

## ROOF CLAMP

LSS-0005 Short Post  
LSS-0014 Purlin Needle 1.0m  
LSS-0015 Purlin Needle 1.8m  
LSS-0026 Roof Clamp  
LSS-0031 Tee Bracket  
LSS-0034 Large Cross Over

## BOLT-ON

LSS-0006 Long Post  
LSS-0020 Bolt-On – Tilt Bracket  
LSS-0022 Side Bracket  
LSS-0030 Short Slider  
LSS-0034 Large Cross Over

## PARAPET CLAMP

LSS-0005 Short Post  
LSS-0023 Parapet Clamp

## BOLT-DOWN

LSS-0005 Short Post  
LSS-0032A Bolt-Down Plate

## ENRTY GATES

LSS-0055 Rail Gate Slide  
LSS-0056 Rail Gate Keeper

# RESIDENTIAL PARTS

## MINIMAL OVERHANG

LSS-0006 Long Post  
LSS-0068 Top Plate Bracket

## THRU TILE

LSS-0005 Short Post  
LSS-0066 Thru Tile Bracket

## UNDERFASCIA

LSS-0006 Long Post  
LSS-0015 Purlin Needle 1.8m  
LSS-0030 Short Slider  
LSS-0031 Tee Bracket  
LSS-0060 Rafter Clamp  
LSS-0063 Large Post Support  
LSS-0064 Right Angled Post Support

## POLE

LSS-0005 Short Post  
LSS-0040 Pole Roof Bracket  
LSS-0041 Right Angled Coupler  
LSS-0042 Pole 4.5m Aluminium  
LSS-0043 Base Plate

## ROOF BOOT

LSS-0004 Roof Boot  
LSS-0005 Short Post  
LSS-0014 Purlin Needle 1.0m  
LSS-0015 Purlin Needle 1.8m  
LSS-0034 Large Cross Over  
LSS-0037 Angled Cross Over (Blue or Yellow)



# COMMERCIAL SYSTEMS



## PURLIN SYSTEM

The EWRG Purlin system is highly adaptable and allows full access to roof areas with systems connected to purlins or girts, for up to 3-metre post spans. Purlin is easy and efficient to install to all:

- C and Z purlin roof lines
- Clamping or screwed systems
- Box steel fascia setups

**LSS-0006 LONG POST**



**LSS-0009 EXTRA RAIL CLAMP**



**LSS-0010 EXTENSION POST**



**LSS-0010A EXTENSION SIDEXSIDE**



**LSS-0011 MULTI CLAMP**



**LSS-0013 VERTICAL FLANGE CLAMP**



**LSS-0013A PURLIN NEEDLE**



**LSS-0014 PURLIN NEEDLE 1.0M**



**LSS-0015 PURLIN NEEDLE 1.8M**



**LSS-0016 LARGE G PURLIN CLAMP**



**LSS-0018 NARROW G CLAMP**



**LSS-0019 DROP PURLIN CLAMP**



**LSS-0020 BOLT-ON TILT BRACKET**



**LSS-0021 DROP LIP FASCIA PURLIN CLAMP**

**LSS-0029 PARALLEL SLIDER**



**LSS-0030 SHORT SLIDER**



**LLS-0031 TEE BRACKET (GREEN)**



**LSS-0034 LARGE CROSS OVER**



**LSS-0035 EXTENDED CROSS OVER**



**LSS-0037 ANGLED CROSS OVER  
– 22 DEGREES – BLUE OR YELLOW**



**LSS-0045 RIGHT ANGLED BRACKET**



## BOLT-ON CONCRETE AND MASONRY BLOCK WALLS

EWRG Bolt-On systems are ideal for concrete panel walls or core filled masonry block walls. Bolt-On easily adjusts from the edge of walls. Suitable for up to 3-metre post spans.

LSS-0006 LONG POST



LSS-0020 BOLT-ON – TILT BRACKET



LSS22 SIDE BRACKET



LSS-0030 SHORT SLIDER



LSS-0034 LARGE CROSS OVER



## BOLT-DOWN

The EWRG Bolt-Down system can be fixed to concrete slabs, timber floors or steel structures. Kick Boards can be fitted where required. Suitable for up to 3-metre post spans.

LSS-0005 SHORT POST



LSS-0032A BOLT-DOWN PLATE



## ENTRY GATES

LSS-0055 RAIL GATE SLIDER



LSS-0056 RAIL GATE KEEPER



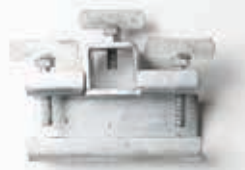
## BOND DECK, FORM WORK & STEEL BEAMS

Allowing full access to form and concrete workers, the EWRG Bond deck and steel beam system can be fitted to I Beams up to 650mm deep. Suitable for up to 3-metre post spans.

LSS-0006 LONG POST



LSS-0011 MULTI CLAMP



LSS-0020 BOLT-ON – STRUCTURAL STEEL



LSS-0035 EXTENDED CROSS OVER



LSS-0045 RIGHT ANGLED BRACKET



LSS-0046 EXTENDED POST SUPPORT



## ROOF BOOT

The EWRG Roof Boot system is suitable for all penetrated roof surfaces, e.g., custom orb, trimdeck, spandek, etc., and is engineered for both gutter line and barge line containment. The system uses existing screws. Suitable for up to 3-metre post spans.

LSS-0004 ROOF BOOT



LSS-0005 SHORT POST



LSS-0014 PURLIN NEEDLE 1.0M



LSS-0015 PURLIN NEEDLE 1.8M



LSS-0034 LARGE CROSS OVER



LSS-0037 ANGLED CROSS OVER (BLUE OR YELLOW)



### ROOF CLAMP

EWRG's Roof Clamp system is designed for use on Klip Lok and Speed Deck profiles and is engineered for both gutter line and barge line containment. Suitable for up to 3-metre post spans.

<b>LSS-0005 SHORT POST</b>	<b>LSS-0014 PURLIN NEEDLE 1.0M</b>
	
<b>LSS-0015 PURLIN NEEDLE 1.8M</b>	<b>LSS-0026 ROOF CLAMP</b>
	
<b>LSS-0031 TEE BRACKET</b>	<b>LSS-0034 LARGE CROSS OVER</b>
	

### PARAPET CLAMP

<b>LSS-0005 SHORT POST</b>	<b>LSS-0023 PARAPET CLAMP</b>
	



# RESIDENTIAL SYSTEMS



## MINIMAL OVERHANG

EWRG Minimal Overhang systems suits where there is a small overhang of up to 350mm. Systems can be fitted to top plates or studs in post spans of up to 3 metres.

LSS-0006 LONG POST



LSS-0068 TOP PLATE BRACKET



## UNDERFASCIA

The EWRG Underfascia system fits to standard and most non-standard trusses for both timber rafters and most light framed metal structures. The system allows full access to metal and tile roof surfaces. Post spans adjust up to 3 metres.

LSS-0006 LONG POST



LSS-0015 PURLIN NEEDLE 1.8M



LLS-0030 SHORT SLIDER



LSS-0031 TEE BRACKET



LSS-0060 RAFTER CLAMP



LSS-0063 LARGE POST SUPPORT



LSS-0064 RIGHT ANGLED POST SUPPORT



## THRU TILE

Suitable for new, re-roofing or maintenance situations. The EWRG Thru Tile system is an easy and efficient application for new tile roofs where the first row of tiles is not clipped. The system does not require sarking to be cut if already fitted.

LSS-0005 SHORT POST



LSS-0066 THRU TILE BRACKET



## RE ROOF

EWRG Re-roof systems are used to assist roof replacements or maintenance requirements. They include the Roof Boot and Pole systems.

### Roof Boot

The EWRG Roof Boot system is suitable for all penetrated roof surfaces, e.g., custom orb, trimdeck, spandek, etc., and is engineered for both gutter line and barge line containment. The system uses existing screws. Suitable for up to 3-metre post spans.

- Fitted along gutter lines of roof surfaces pitched up to 25 degrees.
- Up to 3 metre post spans.

\*Not suitable for barge/gable lines.

LSS-0004 ROOF BOOT



LSS-0005 SHORT POST



LSS-0014 PURLIN NEEDLE 1.0M



LSS-0015 PURLIN NEEDLE 1.8M



LSS-0034 LARGE CROSS OVER



LSS-0037 ANGLED CROSS OVER (BLUE OR YELLOW)



## POLE

Suitable for metal roofs, the Pole system can be fitted to side structures e.g., fascia or wall structures or fixed to the first batten line. Suitable for up to 3 metre post spans.

LSS-0005 SHORT POST



LSS-0040 POLE ROOF BRACKET



LSS-0041 RIGHT ANGLED COUPLER



LSS-0042 POLE 4.5M ALUMINIUM



LSS-0043 BASE PLATE

